



Response Quick Step Guide

Configuring Clickers

Depending on your requirements, the PRS RF clicker may need to be configured. Only PRS RF clickers can be configured. By default, PRS RF clickers are configured as *Normal*.

Normal

- Factory default
- Generally used in a university setting when the student owns the clicker or when the clicker is the property of the student for the school term
- The student enters his or her student ID one time only. The student ID is stored in the PRS RF clicker's memory and is transmitted with each answer to ensure the student receives credit for the response.

Loaner

- Requires initial configuration
- Typically used when the school owns the clickers and multiple classes share the clickers
- Because the students share the clickers, the student IDs are not remembered by the clicker and therefore it prompts for the student ID each time it is powered on.
- Also may also be used in case a student forgets to bring their clicker to class.

Instructor

- Requires initial configuration
- The Instructor clicker is used by the teacher to send commands to the session and to remotely control it from anywhere in the room



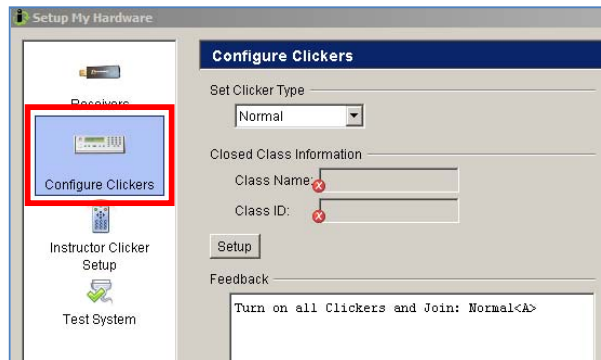


Response Quick Step Guide

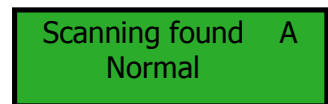
Normal Configuration


As mentioned above, the PRS RF clickers are configured as normal by default. You will configure clickers as Normal in case you need to delete student IDs from previously used clickers or change back to default from another configuration such as Loaner.

1. Select **Setup My Hardware** from the main screen.
2. Highlight **Configure Clickers**, the 2nd option on the Setup My Hardware window.
3. Choose **Normal** from the **Clicker Type** drop down menu.
4. Click on the **Setup** button to display the Feedback instructions.
5. Turn on your PRS RF clicker.



6. Input the number or letter (the channel) that appears at the end of the line. In this case, it is the letter <A>. The channel may vary on each setup.



7. Once you see **Normal** on the 2nd line, press the  key to join.
8. If you see Join ID followed by a number that means that you have successfully configured your clicker.





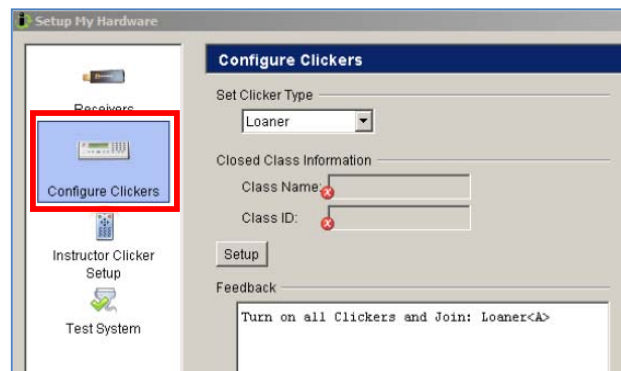
Response Quick Step Guide

Loaner Configuration

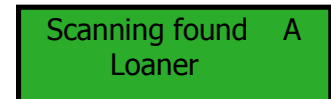
If you are configuring your clickers as Loaner, you are facing one of the following two scenarios:


- You own a set of clickers that will be used by multiple sets of students, and you want the students to be able to use whatever clicker they pick up at the beginning of class.
- All students in your class(es) have purchased a clicker, and you want a few spares in case they forget to bring their clickers.

1. Select **Setup My Hardware** from the main screen.
2. Highlight the 2nd option on the Setup My Hardware window, **Configure Clickers**.
3. Choose **Loaner** from the **Clicker Type** drop down menu.
4. Click on the **Setup** button to display the Feedback instructions.
5. Turn on PRS RF clicker.



6. Input the number or letter (the channel) that appears at the end of the line. In this case, it is the letter <A>. The channel may vary on each Setup.



7. Once you see **Loaner** on the 2nd line, press the  key to join.
8. If you see Join ID followed by a number, that means that you have successfully configured your clicker.



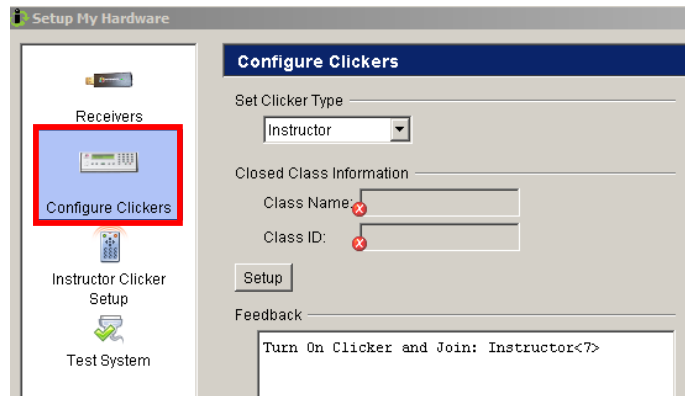


Response Quick Step Guide

Instructor Configuration


A PRS RF clicker configured as an Instructor clicker is used to remotely control a Response session. For example, an Instructor clicker allows you to start and stop a question from anywhere in the classroom.

1. Select **Setup My Hardware** from the main screen.
2. Highlight the 2nd option on the Setup My Hardware window, **Configure Clickers**.
3. Choose the Clicker Type **Instructor** from the drop down menu.
4. Click on the **Setup** button to display the Feedback instructions.



5. Turn on your PRS RF clicker.
6. Input the number or letter (the channel) that appears at the end of the line. In this case, it is the number <7>. The channel may vary on each setup.

Scanning found 7
Instructor

7. Once you see **Instructor** on the 2nd line, press the  key to join.
8. If you see Join ID followed by a number, that means that you have successfully configured your clicker.
9. When the Instructor clicker has been configured, highlight the **Instructor Clicker Setup** button in the Navigation Pane.

10. Click on the **"Enable Instructor Clicker"** checkbox.
11. Enter the **Radio (Clicker) ID** of the Instructor or Maestro clicker (Cricket) in the text box.

